



www.placebofabtech.com



**Fabrication
with Innovation**



Registered Office:
PLACEBO FABTECH PVT. LTD.
5-35-103, Placebo Complex, Prashanth Nagar, I.E. Kukatpally, Hyderabad-500 072
e: info@placebofabtech.com www.placebofabtech.com
Work: Plot No: 17, TSIC, Automotive Park, Kallakal, Toopran Mandal, Medak Dist,
502 334 Telangana India

mindmint creative: 98484 67674



thinking Big



Placebo Fabtech Pvt. Ltd. is a young company based in Telangana set up by group of entrepreneurs with vast experience in steel fabrication, Manufacturing, construction, infrastructure projects. PFPL is involved in heavy steel fabrication and Erection, heavy engineering activities. The company is managed by qualified and experienced engineers and take pride in providing excellent service and quality to its customers.

We are well conversant with International Welding Standards. Our Welders are qualified as per ASME Standards and We have established quality systems and will be shortly an ISO 9001, ISO - 14001 and SIO 45001 Certified Company, with RDSO approvals also.



The Engineering Division is powered by a highly qualified, experienced and specifically trained designers. Innovation is a constant mantra in the development of necessary jigs, fixtures and other tooling. We are well equipped with CNC plasma cutting machine with HyperthermMAxpro 200 power source and can cut upto 50mm thickness plate with required profile.



next generation fabrication



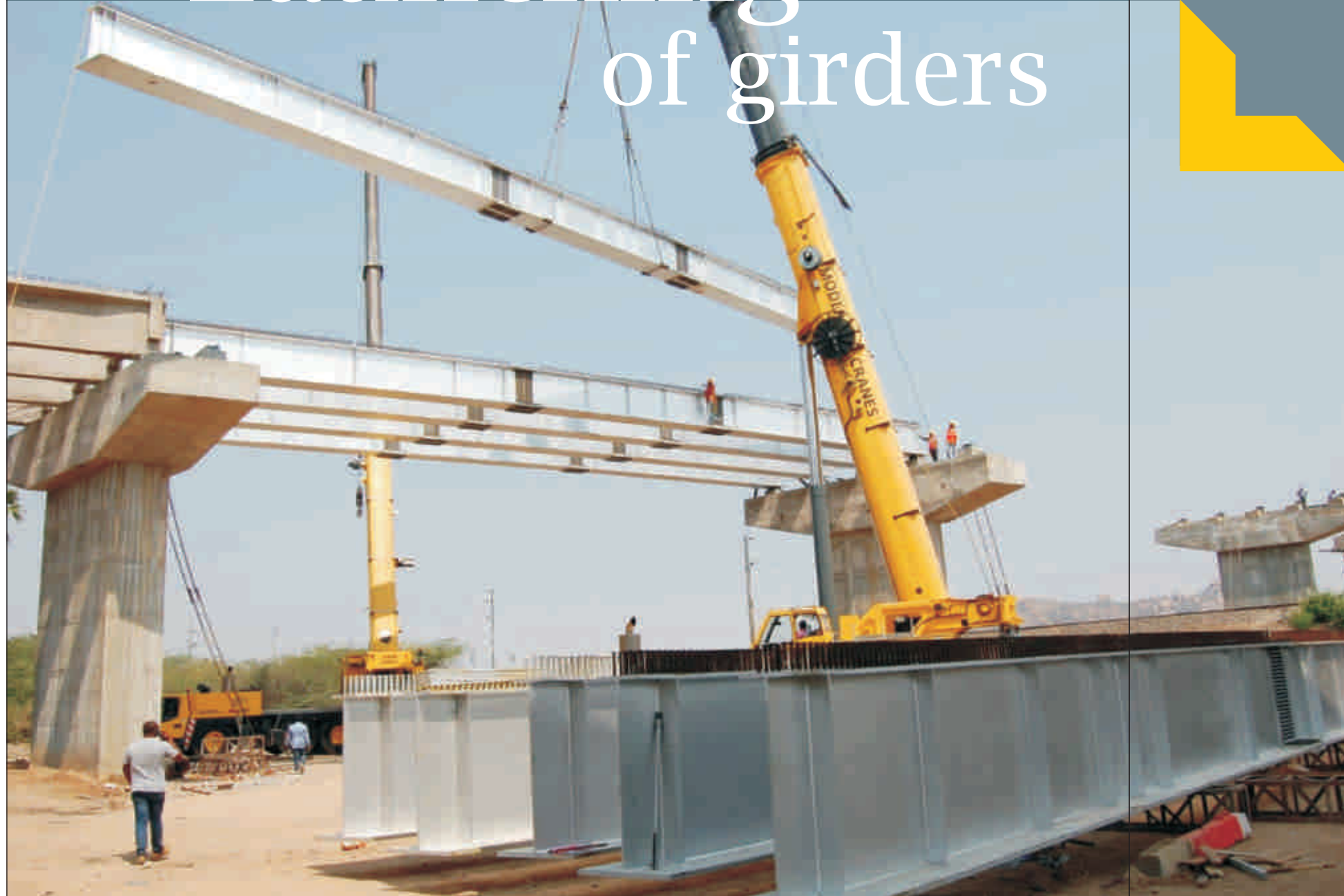
With the most innovative approach towards the modern day infrastructural needs across the country, Inline Fabtech is handling every project with minute details following international standards with latest technology. Inline Fabtech expertise rests in delivering flawlessly accurate engineering excellence within committed time frame to ensure timely completion of the projects by our esteemed clients.

Inline Fabtech fabricates steel structures from plates and rolled sections such as Columns, Beams, Bracings, Top Girders, Box sections conforming to technical standards and specifications under IS, ASTM, BS, EN and other global standards monitoring organizations, guaranteeing robustness and durability for power plant, steel plant and Railway Bridges.



Shot Blasting process

Launching of girders



Erection

Inline Fabtech goes beyond its expertise in structural fabrication to take erection work with the vision of emerging as a professional. The well trained and committed team of structural engineers and workers manage the erection work at site adhering best quality standards with utmost safety norms.

Inline Fabtech team plans and executes the erection of structure as per the sequence and within committed time frame to achieve customer satisfactions in all respect.

Al spray metallizing process

Equipped with

- ▶ Shear connector welding machine
- ▶ Hydraulic presses.
- ▶ Automated shot blasting unit
- ▶ Metalizing Facility
- ▶ Painting Booth
- ▶ CNC plasma cutting machine
- ▶ SAW welding machine.

Equipment installation in pipeline

- ▶ Automatic beam welding machine
- ▶ CNC drilling machine

Size Doesn't Matter

Fabrication Facility

Production Capability: 1000 MT/ Month

Products: Pre Engineered Building, structural multistoried building and Road Over Bridges - For Railway Composite Steel Girders.

Fabrication of steel girders in following sizes:

- ▶ Flange 140mm to 1200mm, thickness 6mm to 80mm
- ▶ Web 180mm to 3000mm, thickness 6mm to 60mm
- ▶ Maximum length 20mtrs

Infrastructure: Factory with covered area of 70,000 Square foot with 4nos EOT cranes of 20 ton capacity each and Open space 1, 50,000 Square foot.



Quality Assurance



Quality is a continuous process at Placebo Fabtech - where organization-wide action is taken to increase effectiveness and efficiency of the engineering process. This is our effort to concentrate all our energy on improving our performance for the benefit of our clients.

Placebo Fabtech takes a proactive stand towards quality; moving beyond Quality Control to provide you Quality Assurance, so you can be confident that your requirements will be consistently met with assured quality.

Our stringent process ensures that high quality standards are reflected as results in your business, guaranteeing your satisfaction every time.

Inline Fabtech goes beyond its expertise in structural fabrication to take erection work with the vision of emerging as a professional. The well trained and committed team of structural engineers and workers manage the erection work at site adhering best quality standards with utmost safety norms.

Inline Fabtech team plans and executes the erection of structure as per the sequence and within committed time frame to achieve

